

### Larimer County Imposed Fire Restrictions

On July 29th and effective until Sept 2nd, Larimer County imposed certain fire restrictions related to open fires, contained fires and fireworks in unincorporated Larimer County. These restrictions were adopted because of the increased wild-fire, forest and grass fire risks related to current hot, dry conditions in the area.

The prohibition of open fires applies to open burning, including camp and cooking fires, welding or acetylene or other open flame torches; the burning of irrigation ditches (except for ditches completely surrounded by irrigated farmlands where burning is necessary for crop survival AND written approval by the Sheriff of Larimer County is granted in advance); and the use of fireworks (refer to ordinance for specific prohibitions and exemptions).

The prohibition does not apply to fires in camp stoves or grills used for cooking or heating, fueled by bottled gas or pressurized liquid; fires in permanent stationary masonry or metal fireplaces; commercially operated wood/charcoal fired cooking grills; charcoal fired grills used at a private residence and located on a non-combustible surface of at least 10 feet in diameter; and smoking within an enclosed vehicle or building (refer to ordinance for specific information and exemptions).

The ordinance can be viewed online at [www.Livermorefire.com](http://www.Livermorefire.com) and <http://www.co.larimer.co.us/>

## Power Failures: Can you call for help when the power goes out?

Most people rely on electrical power for basic needs. Food needs refrigeration, water needs to be pumped from the ground, and we need lighting to see. The Livermore area is no stranger to power outages. Most members of our fire district were affected for several hours when the Windsor tornado damaged transmission lines. (Those of you who are "off the grid" or who have automatic back up generators may not have even

noticed.) The severe spring storm a few years ago left many homes without power for several days.

What happens if there is an emergency that needs reporting during a power failure? Will your phone work in a power failure? Most new phones do not work without electricity. Nearly everyone has an answering machine on their home phone, which needs 110 volts (house current) to operate. Most portable phones

require 110 volts and will not work during an outage.

The basic phone service provides its own power. This is a very low voltage supplied by batteries at their facilities in Ft Collins. The phone company has undergrounded most phone lines, making them very resistant to weather damage. If you have a phone that will run without house current, you will probably still be able to make calls. There are still interruptions, but

via radio and pagers. This communications system has a generator back up and is not susceptible to power outages. Livermore Fire will still respond to fire and medical emergency calls during power outages.

Other considerations for power failures are:

those are usually due to other problems and are usually less wide spread than power outages.

In order to take advantage of the phone system, consider purchasing a basic phone that does not need house current. These "old-school" phones simply plug into the phone jack to work.

DETERMINE if your family has health care products which need 110 volts, such as oxygen concentrators or respiratory aids. Keep alternative sources of these aids and know how to use them.

HOW will you get water during an outage?

WHAT will happen to your food in your refrigerator or freezer?

Some manufacturers make answering machines that will work when there is no power. These automatically revert to the phone system's power. You may make and receive calls, but the message functions will not operate. Livermore Firefighters and EMTs are dispatched by the county

as above. If you use an alternative heat or cooking source, make sure that it is rated for indoor use.

TO BE MOST CERTAIN of having power when you want it, particularly if you have essential health or business needs at your home, consider getting a back up generator that can run automatically if the power goes out.

HOW will you heat your home or cook meals? DO NOT run generators inside the home, such as in a basement or attached garage to provide power. Keep them outside or else the inside air will become toxic with carbon monoxide. DO NOT use charcoal grills, propane grills, or camp stoves inside the home for the same

as above.

DO NOT use charcoal grills, propane grills, or camp stoves inside the home for the same

## Clutter Bug Or Hazzard

My mother used to say, "save it, it could be worth money some day." Her other favorite saying was "save it, you can always make a lamp out of it." We all have attachment to the flotsam and jetsam of our lives. Most of the time it is the memory that the item evokes, that keeps us from parting with it. Would it be easier to remove some clutter if you knew it could save the life of a loved one or a firefighter responding to an emergency at your home, outbuilding or vehicle? Whether you are an avid collector, noble recycler, or creative artist there comes a point when all that stuff can be a fire and safety hazard. Put yourself to the test and see if you could be a little safer:

Are the staircases completely cleared, baskets too?

Is there enough room on the floor along side your bed for two firefighters to move a person to do CPR on a hard flat surface?

Is the entrance clear of your treasures so that a firefighter and EMT can get inside carrying their equipment for medical emergencies?

Are electrical outlets overwhelmed with multiples or are you using a power bar with an on off switch?

Can you get to the breaker box? Are the breakers appropriate for your use?

Has your well intended newspaper recycle holding area turned in a mouse feast?

Do you still have your undergraduate textbooks, even though you haven't opened it since the Nixon administration?

Are there stacks of books and magazine that do not fit into the bookcases anymore so they are on the floor?

Are there so many medicines/toiletries new or otherwise in your bathroom, kitchen, tray table, glove box, purse, tote, and backpack, that you would need an Xcel spread sheet to figure out what the current use level is, should there be an medical emergency response?

Don't know where to start? Try doing the "two bag, two-step" for 15 minutes. Grab a trash bag, because you know you have a whole closet, cubby, or box full of them in three different locations. Walk, crawl or climb around the house throwing away two bags every night for just 15 minutes. Whether it is two bags for the recycle center or for donation, just get two bags full and out of the home. That is the difficult part, getting it all the way out. The recycle center on Riverside Drive will take paper, plastic, glass and cardboard and there is even a place for clothing and shoes. The ARC and Goodwill always take serviceable items if you cannot bear to see them go into the trash.

You think you need to buy a new file cabinet for all of those papers, from the first car, bike, house, insurance policy and dearly departed "Fluffy's" veterinarian records. For \$2.00, a paper grocery sack packed as tightly as you can, will be shredded before your very eyes at Document Management Inc. on Riverside Drive.

For other property disposal hints you can reach our District Recording Secretary/Director Diane Watkins at 482-6508.

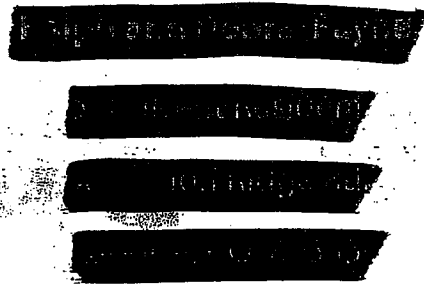
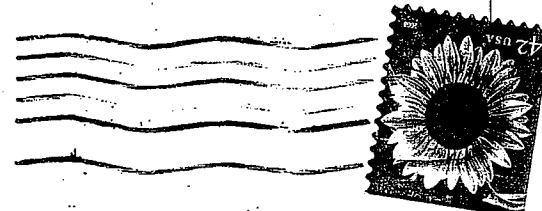
### Open House for Livermore Fire Protection District

October is Fire Prevention Month. On October 4 from 10 am to 5 pm, we want to show you and your family your fire department. Come join us and let us show you some safety tips, our equipment and meet our firefighters and EMTs. There will be hamburgers, hot dogs, drinks and chips for sale, as well as some surplus equipment that LFPD does not need. All proceeds will benefit LFPD as we continue to improve our equipment and service.

LEARNING ABOUT FIRE SAFETY WILL SAVE LIVES AT HOME AND IN OUR COMMUNITY

RETURN SERVICE REQUESTED

Livermore Fire Protection District  
P.O. Box 28  
Livermore, Co. 80536  
970-472-5592



LFPD is supported by District Taxes and your Donations. If you are interested in helping, please contact the District at 970-472-5592

www.livermorefire.com

Volunteer Newsletter  
Editor: Caryl Schonbrun

### Prepare Your Escape Plans

Because fire is a risk in every building — whether you sleep, study, or work there — you should always have an escape plan. You may need to escape within a few minutes of a fire's start, so your safe exit depends on immediate warning from smoke alarms and advance planning of escape routes.

## YOU KNOW YOU'RE A VOLUNTEER WHEN...

You've woken up thinking your pager went off and as you look at it..., it does.

You lay out your clothes from that day so if there is a call at night you can find them quickly.

You carry enough water in your car to extinguish a minor blaze.

You spend a great deal of time explaining to your friends what it means to be a volunteer- "Yes, I'm ALWAYS on duty. No, I'm not kidding!"

You can hear that the siren will go off even before your dog does.

The microwave goes off and you're already out of the house thinking it was your pager... when you realize the popcorn is done.

Your wife/girlfriend has learned to duck and take cover when they hear the pager go off for fear of being run down.

Your girlfriend/wife plays the TONES just to get your attention!!

You leave your spouse with a full cart of groceries, in the checkout line of the grocery store to go to a structure fire.

You have eye contact with the diner across from the station when the

tones go off without paying.... Yelling back to them, "I'll be right back!!"

You complain about all the calls you are getting but secretly wish there were more!

You buy the station wagon/ minivan/SUV just so that you have enough room in your car for all your gear.

You're children own their own "real" bunker gear and think it is their right to go with you to a call.

Change of address?  
email carylred@msn.com

## Summer Newsletter



# LIVERMORE FIRE PROTECTION DISTRICT

## LFPD PARTICIPATES IN MULTI-AGENCY WILDFIRE TRAINING EXERCISE

### IN THIS ISSUE

TRAINING	1
POWER FAILURES	2
FIRE RESTRICTION	2
CLUTTER BUG / OPEN HOUSE	3
FIRE HUMOR	4

Keep our Firefighters safe so that they can keep us safe.

### YARD UPKEEP

Stack firewood at least 30 feet from structures, and 18 inches off the ground.

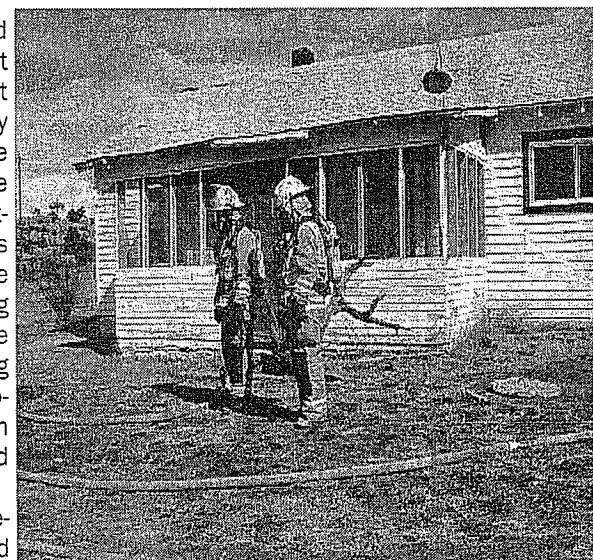
- Remove flammable vegetation within 120 feet of woodpiles.
- Remove unnecessary construction materials, pine needles, leaves and debris. You may not leave the cut material on the ground near roadways.

The FIRE had started the night before but had not been contained by firefighters before morning. Now the day is getting hotter, the humidity is dropping and the winds are getting stronger. The fire is rapidly growing and pushing toward homes which are still occupied by residents.

That is the scenario that faced the participating fire departments in Glacier View on Saturday, June 14. It was an exercise meant to practice the ability of departments to fight this kind of fire and to protect structures. The morning was spent between classes on structure protection techniques, and on

several months to plan and was the idea of Glacier View Chief, Greg Niswinder. Livermore Fire, the State Forest Service, and Larimer County also helped in prepare for the training.

The success of fighting these kinds of events is dependent on following the chain of command and having good communication. Having firefighters



Collins), Wellington, Loveland, Berthoud, Milliken in Weld County, the US Forest Service, Colorado State Forest Service, and Larimer County Emergency Services, practiced various roles needed to suppress this fire.

During the exercise the fire continued to grow. It ran over containment lines, firefighters

the Incident Management System, which is the hierarchy needed to manage the firefighters and equipment for these incidents.

In the afternoon, firefighters and equipment from Livermore, Glacier View, Poudre Canyon, Poudre Fire Authority (Fort

had to move to safety zones, residents had to be evacuated, animals rescued, and injured firefighters treated and transported. All these situations had to be managed by the crews involved while still fighting the fire.

The exercise itself, took

trained in the tasks they need to perform is vital. Firefighters commented after the exercise that having participated in this sort of training helps them to know what to expect when a real event happens. Many participants remarked that it is very unusual to see so many departments coming together and working to-

gether so closely and so well.

How is it, that one careless match, can start a forest fire, but it takes a whole box to start a barbecue?